



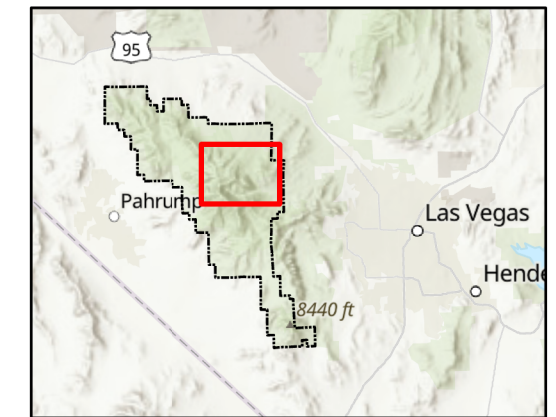
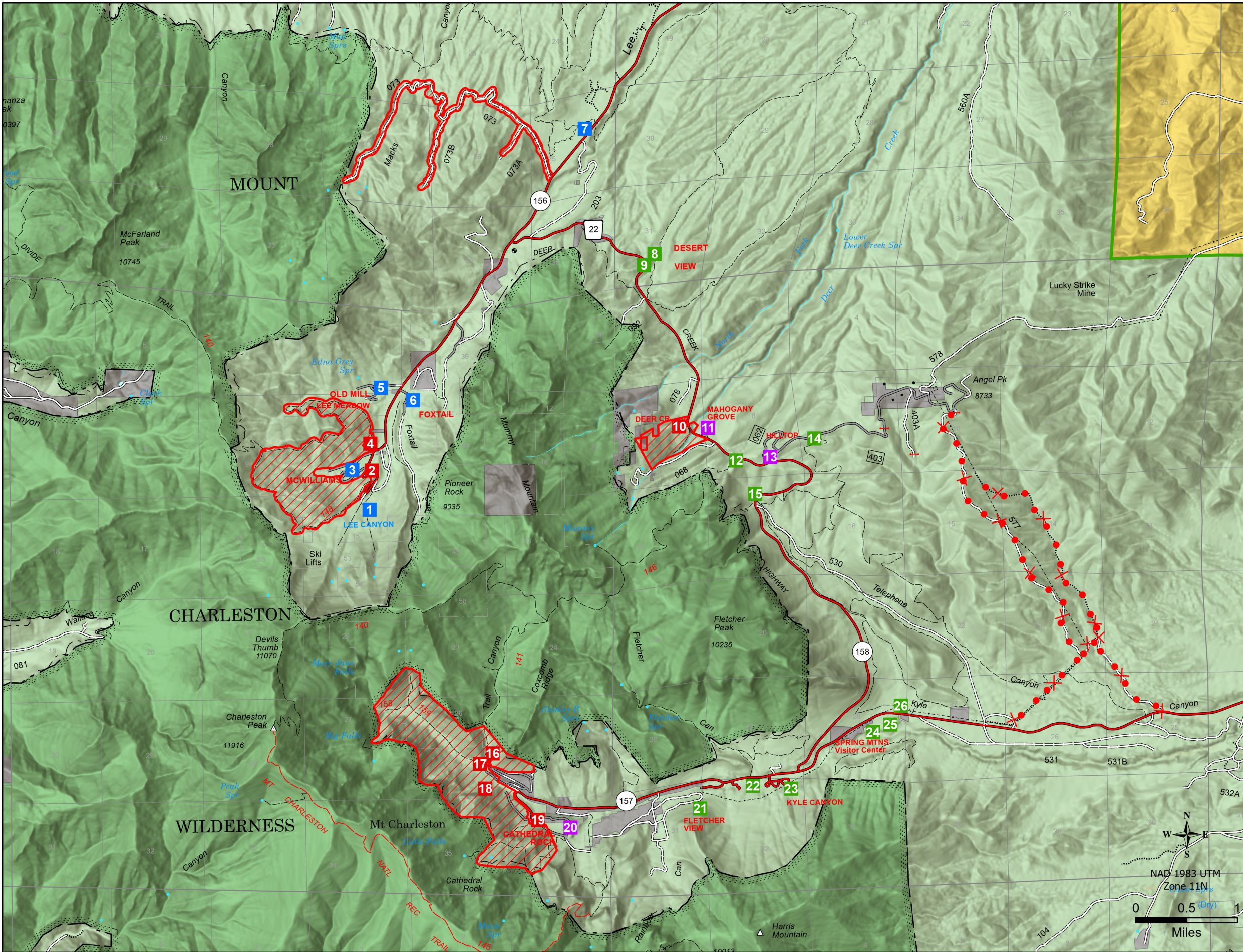
Spring Mountains National Recreation Area - Recreation Site Status

Humboldt-Toiyabe National Forest

Legend

- Closed Roads
- Closed Area
- Closed
- Closed Seasonally
- Open
- Ski Area Operates in Winter
- USDA Forest Service
- Wilderness
- Bureau of Land Management
- Non-FS

#	Site Name	Site Status
1	Lee Canyon Ski Area (Special Use Permit)	Ski Area Operates in Winter
2	Upper Bristlecone Trailhead	Closed
3	McWilliams Campground	Ski Area Operates in Winter
4	Lower Bristlecone Trailhead & Road	Closed
5	Oldmill Picnic Area	Open - Ski Area Operates in Winter
6	Foxtail Group Picnic Area	Ski Area Operates in Winter
7	Sawmill Trailhead & Picnic Area	Open - Ski Area Operates in Winter
8	Desert View Overlook	Open (no highway access)
9	Deer Creek/Catch Pen Trailhead	Open
10	Deer Creek Picnic Area	Closed
11	Mahogany Grove Group Campground	Closed Seasonally
12	Northloop Trailhead	Open
13	Hilltop Campground	Closed Seasonally
14	Juniper Trailhead	Open
15	Robbers Roost/Telephone Trailhead	Open
16	Trail Canyon Trailhead	Closed
17	Mary Jane Trailhead	Closed
18	Echo Trailhead	Closed
19	Cathedral Rock Trailhead	Closed
20	Cathedral Rock Picnic Area	Closed Seasonally
21	Fletcher View Campground	Open 11/3/2023
22	Fletcher Canyon & Eagle's Nest Trailhead	Bathroom/Trails Open 11/3/2023
23	Kyle Canyon Campground/Picnic Area	Open 11/3/2023
24	Spring Mountains Visitor Gateway and Trails	Open 11/3/2023
25	Cliffrose Trailhead	Open
26	Spring Mountains Visitor Gateway Picnic Areas	Open 11/3/2023



Disclaimer

The USDA Forest Service makes no warranty, expressed or implied regarding the data displayed on this map, and reserves the right to correct, update, modify, or replace this information without notification.

Map Author: mattdickinson; Map Creation Date: 10/31/2023